

Geotechnical Zoning of Mexico Valley Subsoil

Zonificación geotécnica del subsuelo del Valle de México

Juárez-Camarena Moisés
Instituto de Ingeniería, UNAM
E-mail: mjuarezc@iingen.unam.mx

Auvinet-Guichard Gabriel
Instituto de Ingeniería, UNAM
E-mail: gauvinetg@iingen.unam.mx

Méndez-Sánchez Edgar
Instituto de Ingeniería, UNAM
E-mail: emendezs@iingen.unam.mx

Información del artículo: recibido: mayo de 2014, aceptado: enero de 2016

Abstract

A new geotechnical zoning map for the subsoil of Mexico Valley is presented. This proposal is based on a Geographic Information System for Geotechnical Borings (GIS-GB), which contains over 10000 soil profiles. In addition to the geotechnical information, available topographic and geological data on the studied area were taken into account. Geostatistical techniques were used to assess the spatial distribution of the thickness of the lacustrine clay deposits within the area down to the so-called deep deposits. As a result, a contour map was obtained that was used to update the current geotechnical zoning map for Mexico Valley. It has been proposed to include this new map into the Building Code for the Federal District (Mexico City).

Keywords:

- subsoil
- borings
- Geographic Information System
- Mexico Valley
- Geostatistics
- correlogram
- estimation
- variance of estimation
- Kriging
- mapping
- geotechnical zoning

Resumen

Se presenta una nueva zonificación geotécnica para el subsuelo del valle de México. Esta propuesta se basa en un Sistema de Información Geográfica para sondeos geotécnicos (SIG-GB), que almacena más de 10000 perfiles de suelo. Además de la información geotécnica, se tomaron en cuenta los datos topográficos y geológicos disponibles relativos a la zona estudiada. Se aplicaron técnicas geoestadísticas para evaluar la distribución espacial del espesor de los depósitos arcillosos del área hasta los llamados depósitos profundos. Como resultado se obtuvo un mapa de contornos que se utilizó para actualizar la zonificación geotécnica para el Valle de México. Se ha propuesto que este nuevo mapa de zonificación geotécnica se incorpore en el nuevo Reglamento de Construcciones para el Distrito Federal.

Descriptor:

- subsuelo
- sondeos
- Sistema de Información Geográfica
- Valle de México
- Geoestadística
- correlograma
- estimación
- varianza de estimación
- Kriging
- mapeo
- zonificación geotécnica

Introduction

The numerous geotechnical borings performed in the urban area of Mexico City can be used to obtain a better knowledge of the subsoil and for improving the accuracy of the existing geotechnical zoning map for regulatory purposes of construction (GDFa, 2004; GDFb, 2004).

To take advantage of the available information, computational and informatics tools, such as Geographical Information Systems as well as powerful mathematical tools based on Geostatistics have been used. Geographic Information Systems are useful to organize geotechnical information for fast and easy reviewing. On the other hand, Geostatistics, defined as the application of random functions theory to the description of the spatial distribution of properties of geological materials, provides valuable tools for estimating data such as thickness of a specific stratum, or local value of a given soil property, taking into account the correlation structure of the medium. Additionally, uncertainty associated to these estimations can be quantified.

In recent years, several studies dealing with the subsoil characterization for different areas within the Valley of Mexico have been published. In that studies, Geostatistical methods have been widely used to assess the spatial distribution of geotechnical properties (Jiménez, 2007; Valencia, 2007; Hernández, 2013; Eyssautier, 2014; Juárez, 2014). The results of these works have been taken into account in the geotechnical zoning proposed in this paper.

Location of study area

The study presented in this paper is focused on the area shown in Figure 1. It includes parts of political delegations Álvaro Obregón, Azcapotzalco, Benito Juárez, Cuauhtémoc, Gustavo A. Madero, Iztacalco, Miguel Hidalgo and Venustiano Carranza in the Distrito Federal and municipalities of Naucalpan, Ecatepec, Nezahualcoyotl, Tlalnepantla in the Estado de Mexico (Figure 1).

Basic information

To characterize the geological formations and soil deposits typical of Mexico Valley subsoil, it was considered necessary to collect data of very different nature and to integrate and present this information in synthesized form.

Topography

Figure 2 shows a *Shaded Relief Model* (SRM) illustrating the topographic configuration of the area. The model was built from the electronic data edited by Instituto Nacional de Estadística Geografía e Informática (INEGI, 2010).

Mexico Valley is a former lacustrine area limited by large topographic elevations: *Sierra de Las Cruces*, *Monte Alto* and *Monte Bajo* to the west reaching an altitude of up to 3600 m, *Sierra de Guadalupe* to the north reaching an elevation of 2960 m, the eastern *Sierra Nevada*

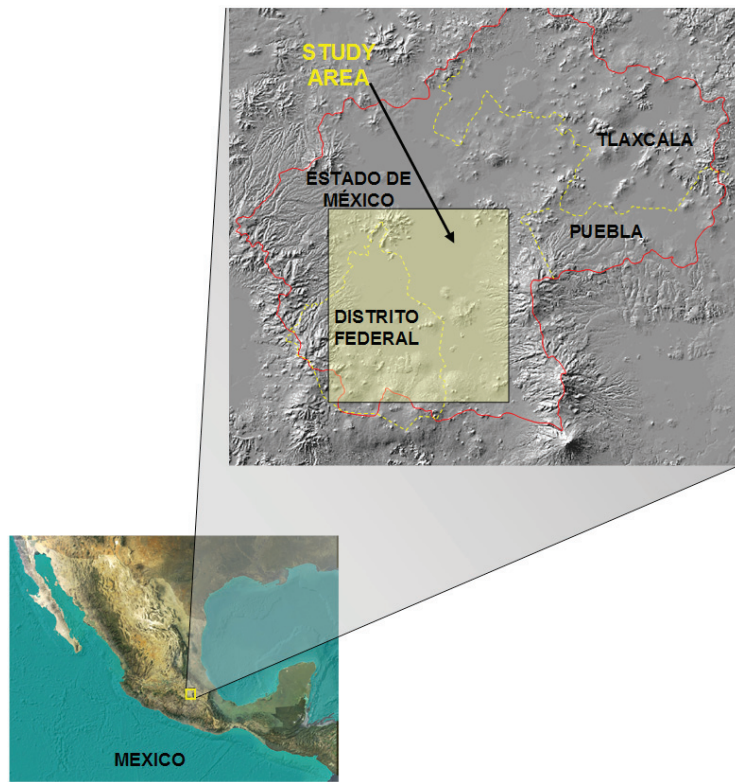


Figure 1. Location of study area

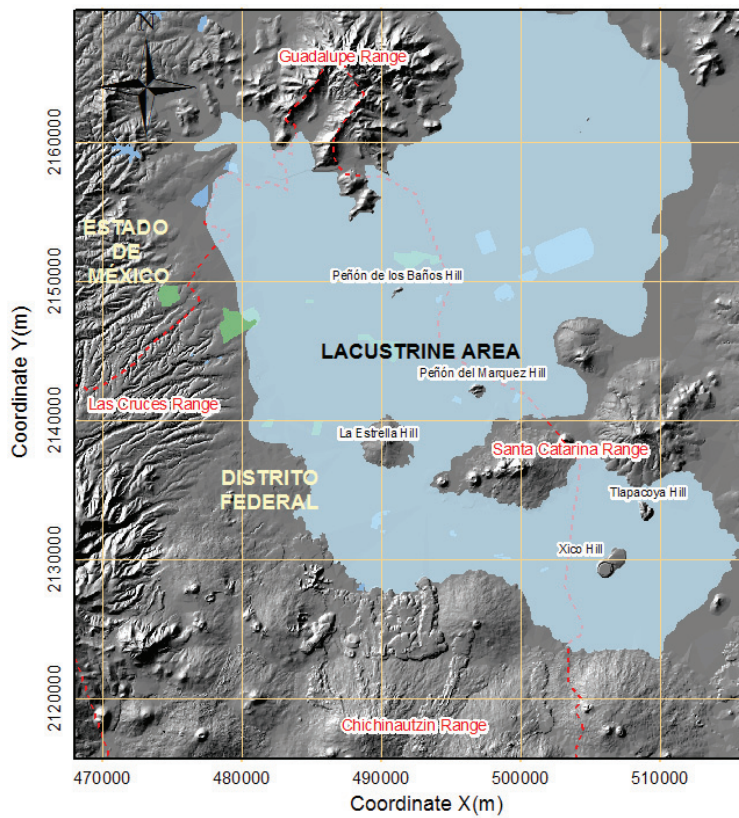


Figure 2. Topographic model for the study area

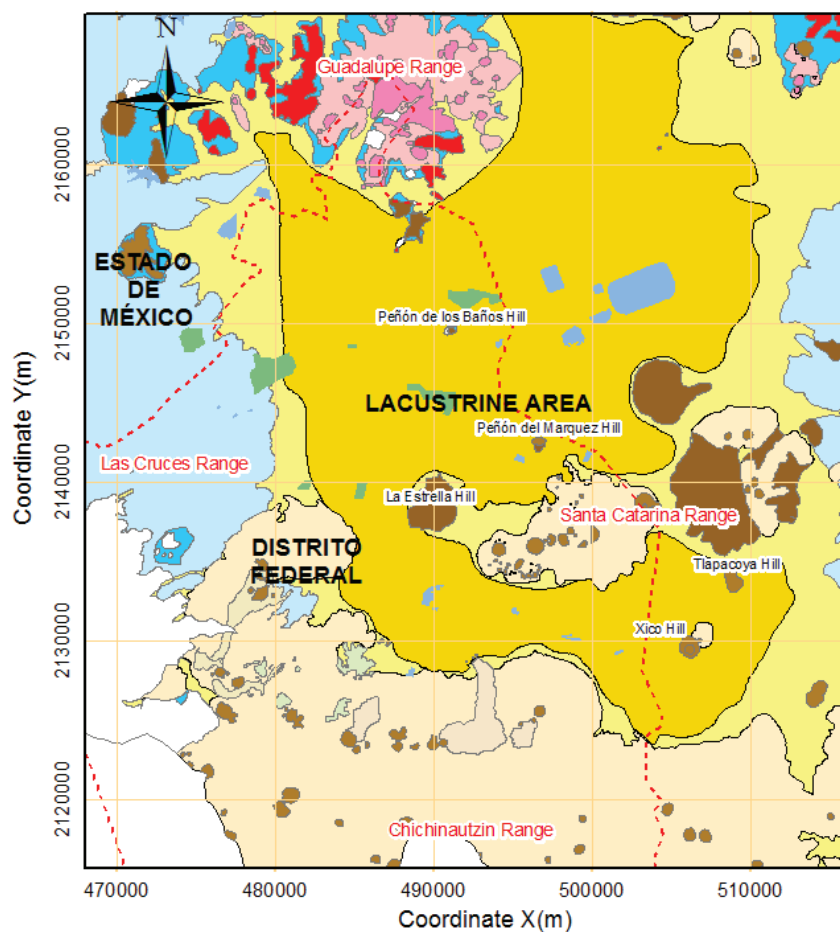


Figure 3. Geology of the study area (Mooser, 1996)

and the Sierra de Chichinautzin to the south reaching an altitude of 3800 to 3900 m. Within the valley, some isolated volcanic domes such as *Peñón de los Baños* (2288 m), *Peñón del Marqués* (2372 m), *Cerro de la Estrella* (2443 m), *Cerro de Xico* (2348 m), *Cerro de Tlapacoya* (2442 m) and those forming *Sierra de Santa Catarina* (2482 m) protrude from the lacustrine area.

Geology

Figure 3 shows a geological map of the area (Mooser *et al.*, 1966).

The central portion of the area consists of lacustrine soft clay deposits (Q1), which are surrounded by alluvial deposits (Qal) that also extend below the lacustrine deposits.

North of the area, the *Sierra de Guadalupe* range is formed mainly of andesitic and dacitic strato-volcanoes topped by acids domes that were formed in their final activity.

On the west side, the *Sierra de las Cruces* range is constituted by a line of large volcanoes oriented from NW to SE; the final activity of these volcanoes was of explosive type leading to the formation of extensive volcanic fans constituted by pyroclastic materials (T) associated with that activity.

On the east side, the *Sierra de Santa Catarina* range is formed by a line of volcanoes oriented in the WE direction; those are very young volcanoes, so that their eruptive products are lavas (Qv) that are interbedded with alluvial (Qal) and lacustrine (Q1) deposits.

Finally, in the south, the *Sierra Chichinautzin* range is an extensive volcanic field of the quaternary formed of many individual bodies, whose volcanic products, mainly lavas (Qv), form a huge mass of rock that separates the Mexico basin from the Cuernavaca valley.

Geographic information system for geotechnical borings

To assess the configuration of typical layers of the subsoil it was taken advantage of the profiles of geotechnical borings provided by public institutions and private contractors. These borings profiles have been incorporated into a Geographic Information System developed by the Geocomputing Laboratory of Institute of Engineering, UNAM (Auvinet *et al.*, 1995).

The *Geographic Information System for Geotechnical Borings* (GIS-GB) for the study area has been built using *ArcMap* ver. 9.2 (commercial software). Nowadays, the system includes a database with information on more than 10000 borings (type, date, location, depth, water table level, etc.) and a database of images of geotechnical profiles, which can be readily consulted (Figure 4).

Incorporating information from the borings in the system requires pre-processing: the information is critically reviewed and converted from analog to digital format of either raster (cell information) or vector (digitized information) type.

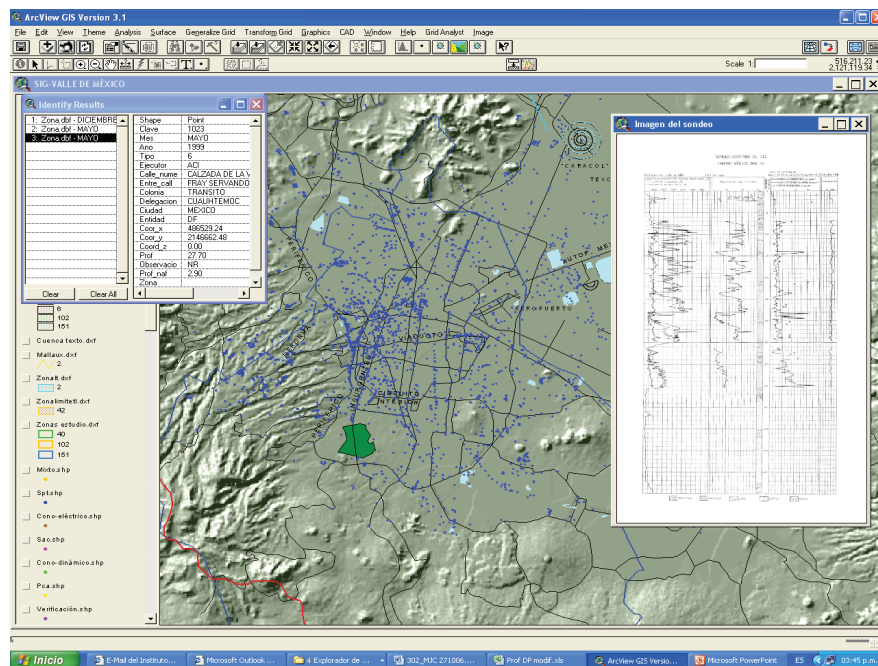


Figure 4. Geographic Information System for Geotechnical Borings

Subsoil model

Vertical model

The typical soil profile sequence in the lacustrine zone of Mexico City subsoil includes a thin superficial *Dry Crust* (DC), a *First Clay Layer* (FCL) several tens of meters thick, a *First Hard Layer* (FHL), a *Second Clay Layer* (SCL) and the so-called *Deep Deposits* (DD) (Marsal and Mazari, 1959).

Horizontal model

Article 170, Chapter VIII, of Mexico City Building Code (GDFa, 2004), establishes that for regulatory purposes, Mexico City is divided into three zones with the following general characteristics:

Zone I. Hills, formed by rocks or hard soils that were generally deposited outside the lake area, but where sandy deposits in relatively loose state or soft clays can also be found. In this area, cavities in rocks, sand mines caves and tunnels as well as uncontrolled landfills are common.

Zone II. Transition, where deep firm deposits are found at a depth of 20 m or less, and consisting predominantly of sand and silt layers interbedded with lacustrine clay layers. The thickness of clay layers is variable between a few tens of centimeters and meters.

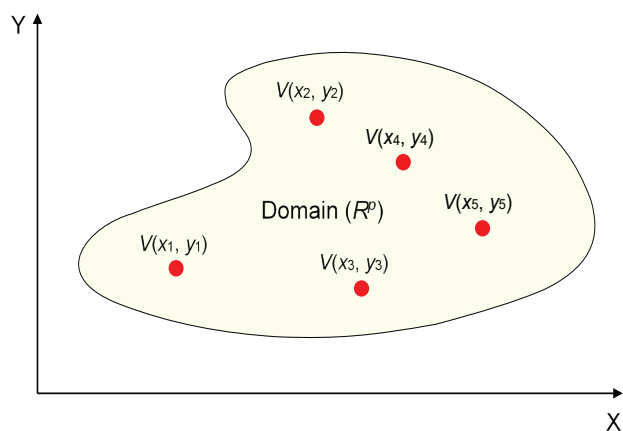
Zone III. Lake, composed of potent deposits of highly compressible clay strata separated by sand layers with varying content of silt or clay. These sandy layers are firm to hard their thickness varies from a few centimeters to several meters. The lacustrine deposits are often covered superficially by alluvial soils, dried materials and artificial fill materials, the thickness of this package can exceed 50 m.

Theoretical concepts of geostatistics

To define with better precision the boundary between zones II and III, a contour map for the thickness of soft clay deposits, also corresponding to the depth to the *Deep Deposits* was constructed, using geostatistical techniques. The basic concepts used for this type of analysis are presented in this section.

Random field (Auvinet, 2002)

It has been proposed to consider spatial distribution of soil properties and geometrical dimensions of soil strata as realizations of random fields (Matheron, 1965; Auvinet 2002). This hypothesis makes it possible to use the mathematical tools of the random function theory for important applications such as estimation of the variables of interest in a specific point or volume where no measurement have been performed.

Figure 5. 2D random field ($p=2$)

Consider a geotechnical variable $V(X)$, either of physical (i.e. water content), mechanical (i.e. shear strength) or geometrical nature (i.e. depth or thickness of some stratum) defined at points X of a given domain R^p ($p = 1, 2$, or 3). In each point of the domain, this variable can be considered as random due to the range of possible values that it can take (Figure 5). The set of these random variables constitutes a random field (Vanmarcke, 1983).

Structural analysis

To describe a stationary random field, the following parameters and functions are generally used (Matheron, 1965; Deutsch, 1992; Auvinet, 2002)

Expected value

$$E\{V(X)\} = \mu_V(X) \cong \frac{1}{N} \sum_{i=1}^N V(X_i) \quad (1)$$

Variance

$$\text{var}\{V(X)\} = \sigma_V^2(X) \cong \frac{1}{N} \sum_{i=1}^N V^2(X_i) - \mu_V^2(X) \quad (2)$$

Autocovariance function

$$\begin{aligned} C_V[V(X), V(X+h\mathbf{u})] = \\ E\{[V(X) - \mu_V(X)][V(X+h\mathbf{u}) - \mu_V(X)]\} \cong \\ \cong \frac{1}{N(h\mathbf{u})} \sum_{i=1}^{N(h\mathbf{u})} [V(X_i)V(X_i+h\mathbf{u}) - \mu_V(X)^2] \end{aligned} \quad (3)$$

Where

h = distance between two points X and $X+h\mathbf{u}$ of the domain

\mathbf{u} = unit vector in the considered direction

N = total number of data

$N(h\mathbf{u})$ = number of data pairs separated by a distance h in direction \mathbf{u} within appropriate tolerance in intervals

The autocovariance function, commonly anisotropic, represents the degree of linear dependence between the values of the property of interest in two different points. It can be written in the form of a coefficient of autocorrelation without dimension whose value is always between -1 and $+1$

Correlation coefficient

$$\rho_V[V(X), V(X+h\mathbf{u})] = \frac{C_V[V(X), V(X+h\mathbf{u})]}{\sigma_V^2(X)} = \rho_V(h\mathbf{u}) \quad (4)$$

The autocovariance and the correlation coefficient are not intrinsic properties of the two points X and $X+h\mathbf{u}$, they also depend on the population, that is to say, on the domain in which the field is defined.

Correlation distance

The correlation distance (also known as *Reach*, *Influence* or *range*) is the distance beyond which variables $V(X)$ y $V(X+h\mathbf{u})$ are no longer correlated.

The correlation distance, $\delta(\mathbf{u}) = 2a(\mathbf{u})$, is conventionally estimated from the experimental correlogram, as:

$$a(\mathbf{u}) = \int_0^{h_c} \rho_V(h\mathbf{u}) dh \quad (5)$$

where: h_c is the first value of h for which $\rho_V(h\mathbf{u})$ is equal to zero.

Estimation

Geostatistics can be used to estimate the value of a property of interest at points of the medium where no measurement has been made. It is then possible to interpolate between available data and to define *virtual* borings, cross-sections or configurations of a given stratum within the soil. The problem can be generalized to the estimation of the average value of a property in any sub-domain of the studied medium, for example, in a given volume or along a certain potentially critical surface.

To reach this objective, linear statistical estimators without bias and with a minimum variance can be used (Best linear Unbiased Estimation or "BLUE"). This technique, also known as Ordinary kriging (Krige, 1962; Matheron, 1965; Vanmarcke, 1983; Deutsch, 1992; Auvinet, 2002)

net, 2002) is also widely used in mining engineering. The estimate is

$$V^*(X) = \sum_{i=1}^n \lambda_i \cdot V(X_i) + \left[1 - \sum_{i=1}^n \lambda_i \right] \cdot \mu_V \quad (6)$$

The value of the (minimized) variance error associated to the estimate, also known as "estimation variance" can also be assessed

$$\sigma_E^2(X) = \text{Var}[V(X)] + v - \sum_{i=1}^n \lambda_i \cdot C(X - X_i) \quad (7)$$

Configuration of deep deposits depth

Definition of the random field

The geotechnical zoning map is based on the subsoil models previously described. In the context of the geostatistical analysis, the depth of *Deep Deposits* (DD) is considered as a random field $V(X)$, distributed within

an R^p domain, with $p = 2$ (area of the former lacustrine zone as defined from topographical and geological information). The set of measured values within the R^p domain (Figure 6) is considered as a random sample of this random field. A structural analysis aimed at defining the field parameters was performed after removing a linear trend to obtain experimental correlograms and correlation distances. Theoretical correlograms were fitted to the data set.

Statistical description

Accepting the ergodic hypothesis for the random field in study, the main statistical parameters of the depth of the deep deposits were estimated (Table 1). In Figure 7 the variability of the data is described graphically by means of a histogram.

Table 1. Statistical parameters of the Deep Deposits depth

Parameter	Value
No. data	544
Mean, m (m)	32.78
Variance, σ^2 (m ²)	319.28
Standard deviation, σ (m)	17.87
Coefficient of variation	0.5451

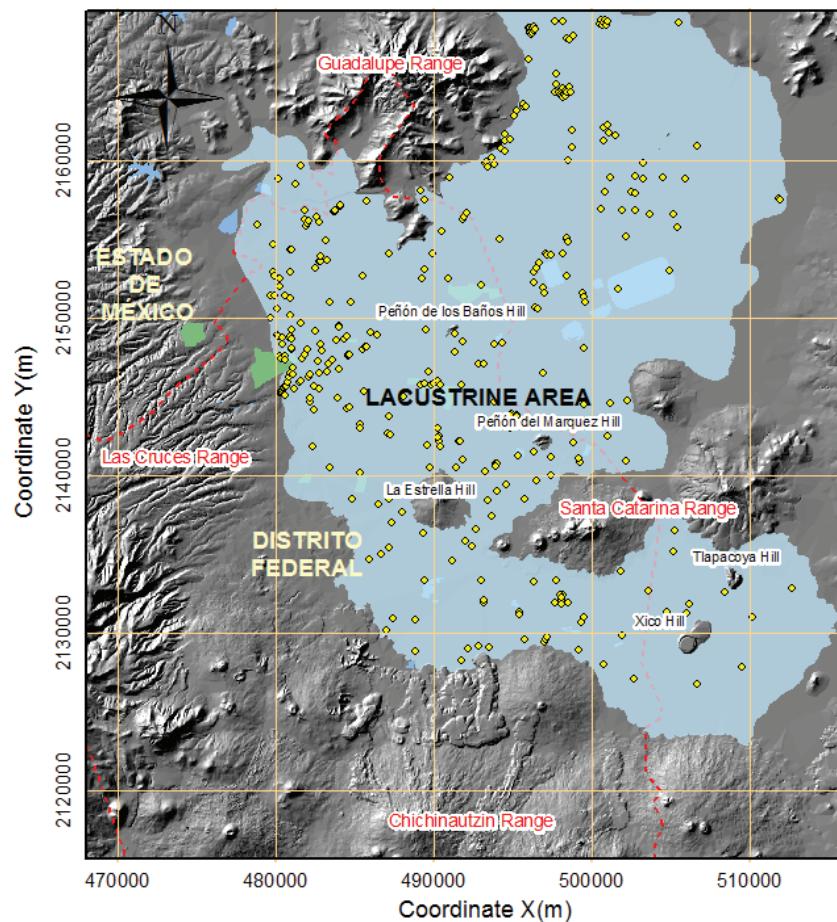


Figure 6. Study area and location of the *Deep Deposits* depth data

Structural analysis

Trend analysis

The general trend of the *Deep Deposits* depth was assessed by means of a linear regression analysis, fitting an equation of the form:

$V(X) = ax + by + c$ to the data. The coefficients that best describe this trend are:

$a = -0.00096398$, $b = 0.00064913$ and $c = -955.997663$.

The corresponding linear regression surface (Figure 8) helps to identify the preferential direction of variation of the random field. The figure shows that the values of the *Deep Deposits* depth decrease from northwest toward the southeast. The presence of this trend is taken into account to calculate the experimental correlograms and in the estimations.

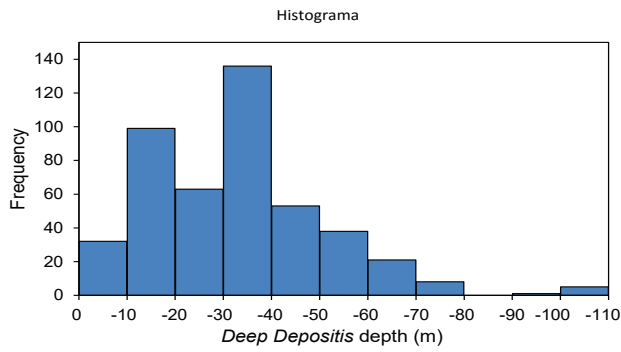


Figure 7. Histogram of the *Deep Deposits* depth

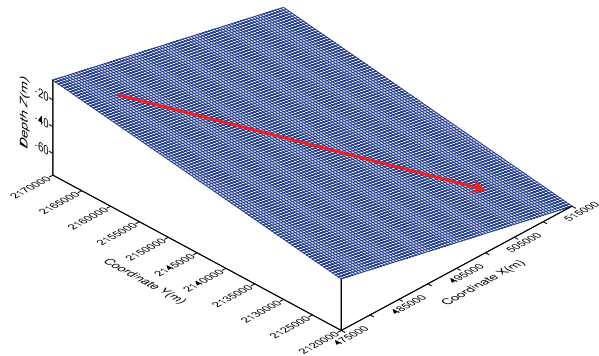


Figure 8. Linear regression surface of the *Deep Deposits* depth

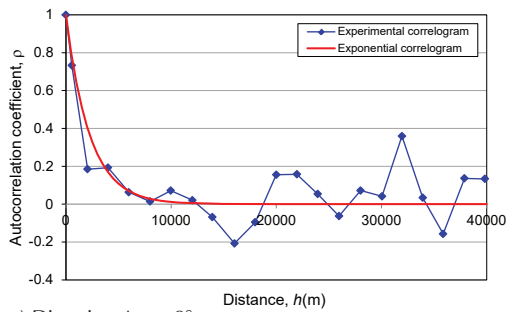
Estimation of the autocorrelation coefficient function

After removing the trend from the original data, a residual field was obtained. The autocorrelation coefficient function was calculated along four preferential directions with azimuth $Az = 0^\circ, 45^\circ, 90^\circ$ and 135° , and steps (Δh) of 250m (Figure 8). These functions describing the correlation structure are shown in Figure 9. The correlation distances (δ) obtained for each preferential direction are shown in Table 2.

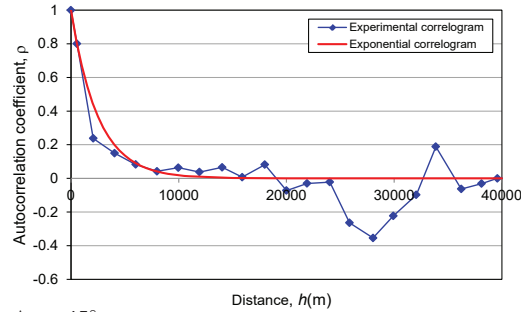
Table 2. Autocorrelation distances of *Deep Deposits* depth

Direction, $Az(^\circ)$	$\delta(m)$
0	4500
45	5000
90	6000
135	4500

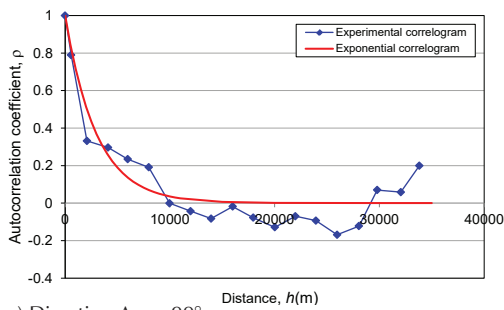
It can be seen that influence distances are of the order of several thousand meters. Some anisotropy is detected. Figure 9 shows that the shortest correlation distance of 4500m corresponds to directions $Az=0^\circ$ and 135° and the highest correlation distance of 600m to direction $Az=90^\circ$.



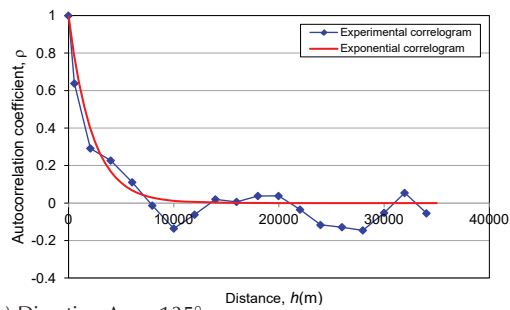
a) Direction $Az = 0^\circ$



a) Direction $Az = 45^\circ$



a) Direction $Az = 90^\circ$



a) Direction $Az = 135^\circ$

Figure 9. Directional correlograms for *Deep Deposits* depth

The experimental correlograms were fitted to an exponential function to obtain the spatial correlation model.

$$\rho = e^{-(2h/\delta)} \quad (8)$$

Estimation

The expected value and estimation standard deviation of the depth of the *Deep Deposits* were obtained at all nodes of a regular grid conveniently defined, using the technique of Ordinary Kriging (Deutsch and Journel, 1992).

Conservatively, a correlation distance $\delta=5000\text{m}$ was considered in direction $Az=45^\circ$ and $\delta=4500\text{m}$ in direction $Az=135^\circ$. The final estimate of the field was obtained reinstating the linear trend into the results. Additionally, the estimation variance was obtained.

Visualization

From the results, a contour map was built showing the spatial distribution of the depth of this layer within the studied area (Figure 10). The results of the estimation can also be represented by a surface map, assigning the value of the depth to the vertical coordinate (elevation) of each point (Figure 11).

Figures 10 and 11 show that the largest *Deep Deposits* depths are located in the area of the former Chalco Lake, in the south part of the lacustrine area. In this area, the *Deep Deposits* depth reaches values as high as 90 and 100m.

Geotechnical zoning map

The map of Figure 10 has immediate practical implications, and is useful to update the geotechnical zoning map of Federal District. The curves of equal depth of *Deep Deposits* are also useful in earthquake engineering to evaluate the site effects expected at some specific place.

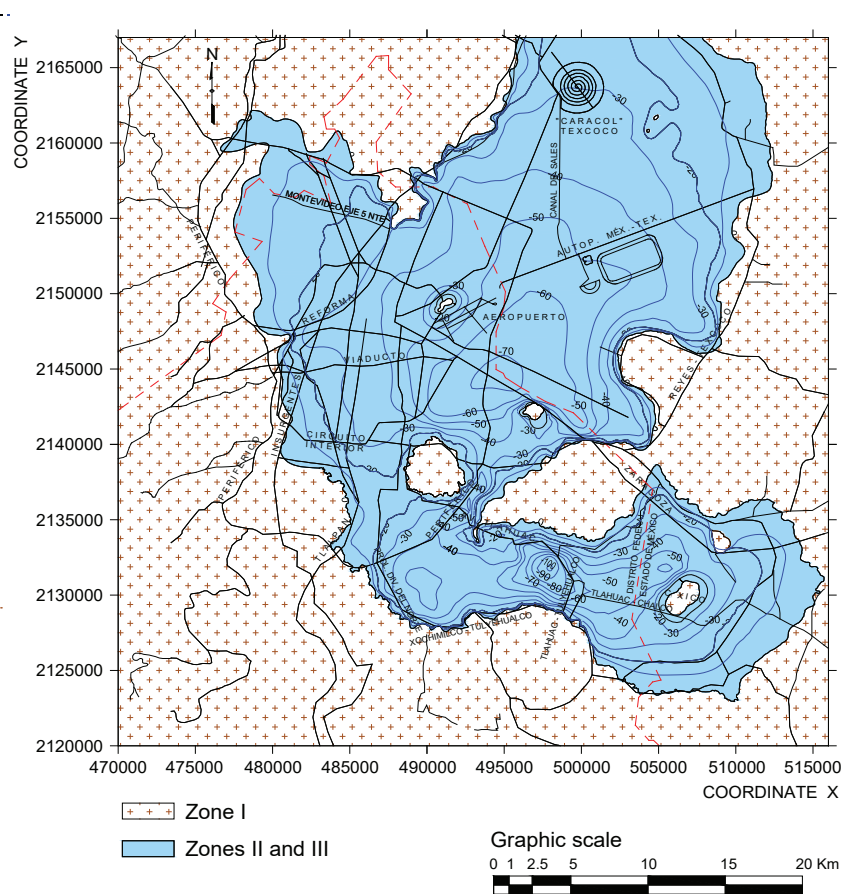


Figure 10. Contour map of *Deep Deposits* depth

Taking into account the definition of the transition zone previously indicated (GDFa, 2004) and using the map of Figure 10, it was possible to define the boundary lines between zones II and III. After defining this boundary line and making the appropriate settings, the new geotechnical zoning map, shown in Figure 12, was built. This map has been proposed for integration into the Building Code.

The purpose of this map is to contribute to improving the current geotechnical zoning map and establishing more precise boundaries to help better define the location of different soil types in the Valley of Mexico. However, it is necessary to remark that the map should be updated in periodic form, integrating the new available information.

It should also be stressed that the geotechnical zoning map only provides a general orientation and in no case should be used to avoid the traditional geotechnical surveys of geotechnical that must be performed for each project as required by the building code.

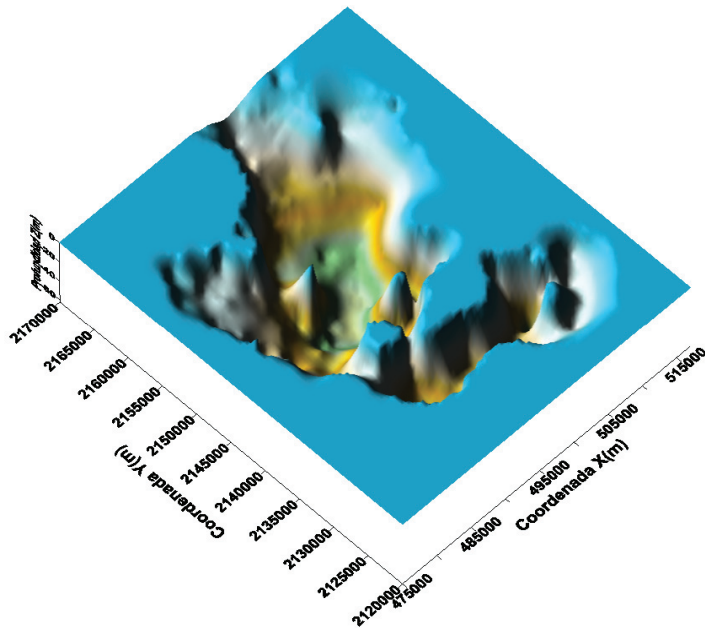


Figure 11. Representative surface of estimated depth of *Deep Deposits*

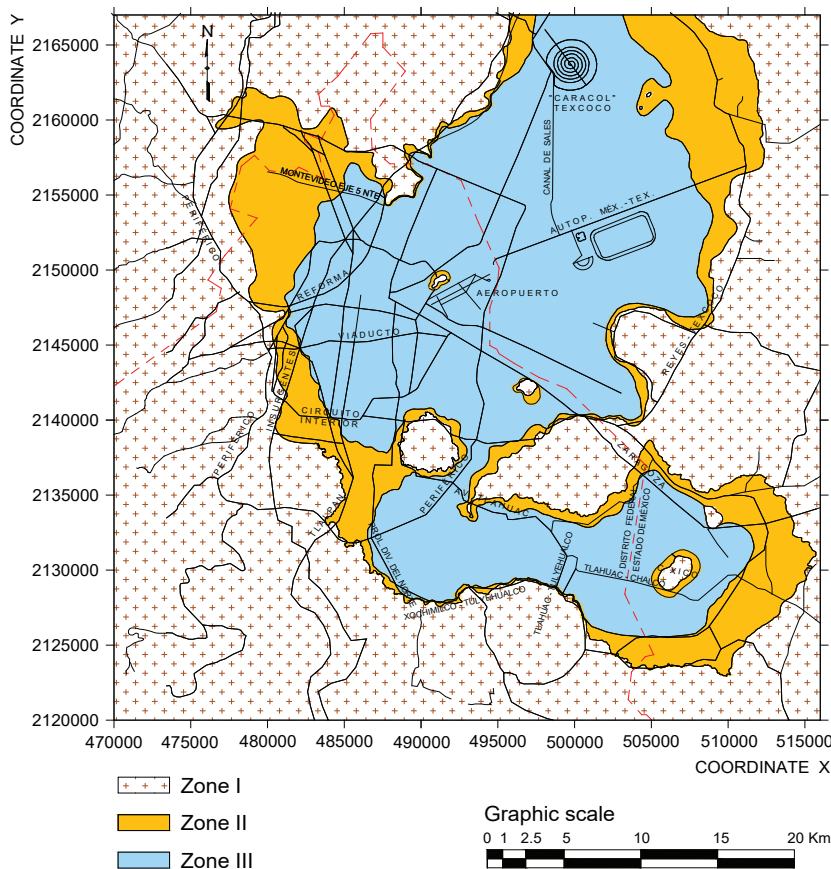


Figure 12. Geotechnical zoning map proposed for Mexico City building code

Conclusions

Recent advances in the geotechnical characterization of the subsoil of Mexico Valley using a *Geographic Information System for Geotechnical Borings (GIS-GB)* that includes more than 10,000 soil profiles have been presented.

Geostatistical techniques were used to define a model of the compressible lacustrine soils lower boundary also known as *Deep Deposits*. It can be concluded that Geostatistical methods provide a rational tool for interpreting the available geotechnical information and to evaluate the spatial variability of the subsoil. They can be useful to eliminate a large part of the subjectivity generally introduced in traditional stratigraphical interpretations and will certainly be used much more frequently in the future.

The availability of increasingly accurate information about the distribution of materials and index and mechanical properties in Mexico Valley subsoil has immediate implications for updating the building code and for planning of future works and is deemed to be useful for civil engineers working in the area.

The geotechnical zoning map shown in this paper only provides a general orientation and in no case should it be used to avoid the traditional geotechnical surveys studies that must be performed for each project as emphasized in the building code.

Acknowledgments

The authors acknowledge the valuable support of Dirección General de Apoyo al Personal Académico, UNAM, of Distrito Federal Government and to various private companies that provided geotechnical information for this work. The con-

tribution of A. Zuñiga to the geological description presented in this paper is also acknowledged.

References

- Auvinet G. *Procesos estocásticos*, Notes on Stochastic Processes, DEPMI-UNAM, Mexico, 1987.
- Auvinet G., Juárez M., Méndez E., Ovando E. Sistema de información geográfica para sondeos geotécnicos, Proceedings, Xth Pan-American Conference on Soil Mechanics and Geotechnical Engineering, vol. 1, pp. 312-324, Guadalajara, Mexico, 1995.
- Auvinet G. Uncertainty in geotechnical engineering, XVIth Nabor Carrillo Lecture, Mexican Society for Soil Mechanics, Querétaro, Mexico, 2002.
- Deutsch C. and Journel A. *Geostatistical Software Library, GSLIB*, New York, Oxford University Press, 1992.
- Eyssautier A. *Caracterización geotécnica del subsuelo de la zona sur del valle de México con aplicación a una obra de infraestructura*, (Professional thesis), FI-UNAM, México, 2014.
- Gobierno del Distrito Federal (GDFa). Reglamento de construcciones para el Distrito Federal, *Gaceta Oficial del Distrito Federal*, 29 de enero, Mexico, 2004.
- Gobierno del Distrito Federal (GDFb). Normas Técnicas Complementarias para Diseño y Construcción de Cimentaciones para el Distrito Federal, *Official Gazette of Distrito Federal*, Mexico, 2004.
- Hernández F. *Caracterización geotécnica del subsuelo de la zona norte de la cuenca de México*, (Master degree thesis), SEPI, ESIA-IPN, Mexico, 2013.
- Instituto Nacional de Estadística Geografía e Informática (INEGI). *Topographic data obtained from LiDAR technique for metropolitan zone of Mexico Valley*, Mexico, 2010.
- Jiménez O. *Caracterización geoestadística del subsuelo de la zona poniente del valle de México*, (Master degree thesis), SEPI, ESIA-IPN, México, 2007.
- Juárez M. *Aplicación de la Geoestadística a la Descripción del Subsuelo del Valle de México*, (Master degree thesis), SEPI, ESIA-IPN, Mexico, 2001.
- Juárez M. and Auvinet G. Caracterización geoestadística del subsuelo del Valle de México. Proceedings of 2nd international congress: Métodos numéricos en ingeniería y ciencias aplicadas, Vol. 1, Guanajuato, Mexico, 2002, pp.287-296.
- Juárez M. *Análisis geoestadístico del subsuelo de la zona lacustre del Valle de México. Caracterización geoestadística del subsuelo del Valle de México*, (Doctoral thesis), Doctoral Program in Engineering, UNAM, México, 2014.
- Krige D.G. *Statistical application in mine evaluation*, J. Institute Mine Survey, South Africa, 1962.
- Marsal R. and Mazari M. *El subsuelo de la Ciudad de México*, Facultad de Ingeniería, Vol. I y II, UNAM, Mexico, 1959.
- Matheron G. *Les variables généralisées et leur estimation*, Masson et Cie, France, 1965.
- Mooser F., Montiel A., Zuñiga. A. Nuevo Mapa Geológico de las Cuencas de México, Toluca y Puebla, Comisión Federal de Electricidad, First Edition, Mexico, 1996.
- Valencia J.D. *Contribución a la zonificación geotécnica de la zona norte del Valle de México*, (Master degree thesis), ESIA-UZ, IPN, Mexico, 2007.
- Vanmarcke E. *Random fields, analysis and synthesis*, The Massachusetts Institute of Technology Press, Cambridge, Massachusetts, USA, 1983.

Citation for this article:**Chicago style citation**

Juárez-Camarena, Moisés, Gabriel Auvinet-Guichard, Edgar Méndez-Sánchez. Geotechnical Zoning of Mexico Valley Subsoil. *Ingeniería Investigación y Tecnología*, XVII, 03 (2016): 297-308.

ISO 690 citation style

Juárez-Camarena M., Auvinet-Guichard G., Méndez-Sánchez E. Geotechnical Zoning of Mexico Valley Subsoil. *Ingeniería Investigación y Tecnología*, volume XVII (issue 3), July-September 2016: 297-308.

Semblanzas de los autores

Moisés Juárez-Camarena. Is a civil engineer by Escuela Superior de Ingeniería y Arquitectura (ESIA) of Instituto Politécnico Nacional (IPN), Mexico. He obtained a master in science degree in soil mechanics by ESIA-IPN and a doctor in engineering degree (soils mechanics) within the master and doctorate program in engineering of Universidad Nacional Autónoma de México (UNAM). Currently, he is a research engineer at the Geocomputing Laboratory of Instituto de Ingeniería, UNAM. He is a member of the Mexican Society for Geotechnical Engineering and of the International Society for Soil Mechanics and Geotechnical Engineering where he participates in the "Technical Committee on Geotechnical Infrastructure for Megacities and New Capitals".

Gabriel Auvinet-Guichard. Got his doctorate in engineering degree from Facultad de Ingeniería, Universidad Nacional Autónoma de México (UNAM). He is a researcher at Instituto de Ingeniería, UNAM and professor in the master and doctorate program in engineering of UNAM. He has been president of the Mexican Society for Soil Mechanics and vice-president for North America of the International Society for Soil Mechanics and Geotechnical Engineering. He currently directs the Laboratory of Geocomputing of Instituto de Ingeniería, UNAM.

Edgar Méndez-Sánchez. Is a civil engineer by Escuela Superior de Ingeniería y Arquitectura (ESIA) of Instituto Politécnico Nacional (IPN), Mexico. He obtained a master in soil mechanics as part of the master and doctoral program in engineering of Universidad Nacional Autónoma de México (UNAM). He is an academic technician at Instituto de Ingeniería, UNAM. Currently he is member of the Mexican Society for Geotechnical Engineering and of the International Society for Soil Mechanics and Geotechnical Engineering where he participates in the "Technical Committee on Geotechnical Infrastructure for Megacities and New Capitals".

